



San Diego Bay at Chula Vista

www.TheLivingCoast.org

Annual Report

Fiscal Year 2018-2019





The Mission of the Living Coast Discovery Center is to:

- Partner in collaborative research and restoration of coastal wetlands and bays.
- Provide student-focused education through STEAM: Science, Technology, Engineering, Art, and Mathematics.
- Increase knowledge of coastal environments, climate change adaptation, and human coexistence with the natural resources of San Diego Bay.

The Living Coast Discovery Center is uniquely located on the San Diego Bay National Wildlife Refuge, Sweetwater Marsh Unit.



Dear Friends and Supporters,

Thank you for your support of the Living Coast Discovery Center. I am proud to share with you the highlights from fiscal year 2018-19.

This year, I had the privilege to work closely with our Board of Directors to refine our strategic plan and ensure we are prepared to accommodate the future growth that will come with the Chula Vista Bayfront project. We also worked to ensure we will provide education programs that are relevant and impactful for the thousands of students that we serve, and that we are maximizing our capacity to provide a meaningful experience for visitors that come through our doors. Thank you to all who provided input and support via surveys and interviews which helped shape our strategic plan.

I want to thank Team Clapper Rail for their continued partnership on the light-footed Ridgway's rail propagation and reintroduction program. We are excited to report the end of a successful season that resulted in the release of 50 rails into the wild along the southern California coast.

I would like to acknowledge the generous support of the City of Chula Vista for providing the Living Coast with a site in which to provide education programs and a place for visitors to enjoy the outdoors and the natural surroundings of the San Diego Bay National Wildlife Refuge, Sweetwater Marsh Unit. I also want to thank the Port of San Diego and U.S. Fish and Wildlife Service for their support and commitment to environmental education for underserved students and youth in San Diego County.

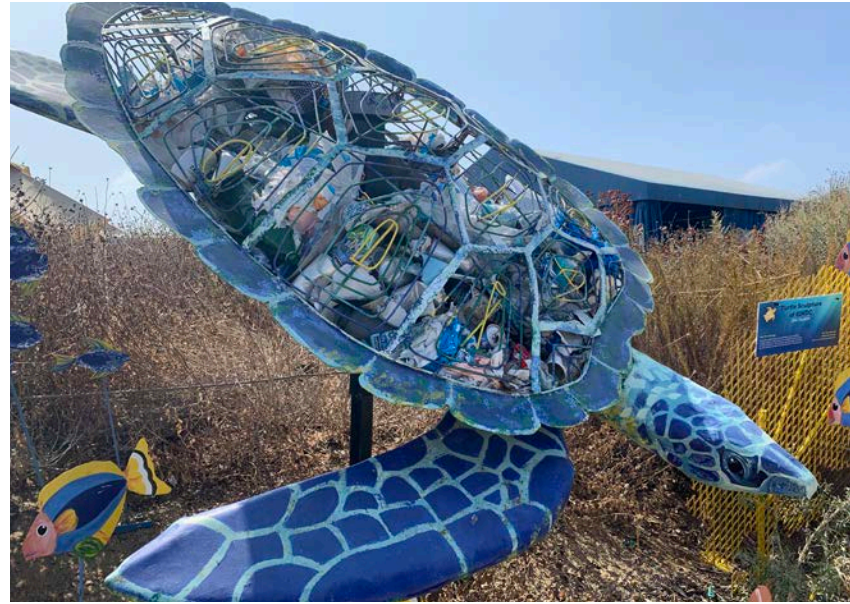
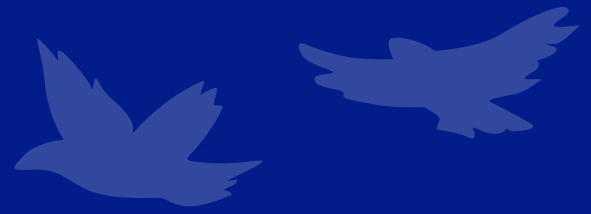
For the sixth consecutive year, our audited financial reports reflected a net positive result. Through our programs, special events, and general admission, close to 80,000 guests visited the Living Coast to learn about native wildlife and the importance of their habitats in our ecosystem. Thank you to everyone who visited and supported us this year.

Sincerely,

A handwritten signature in blue ink that reads "Ben Vallejos". The signature is written in a cursive, flowing style.

Ben Vallejos
Executive Director

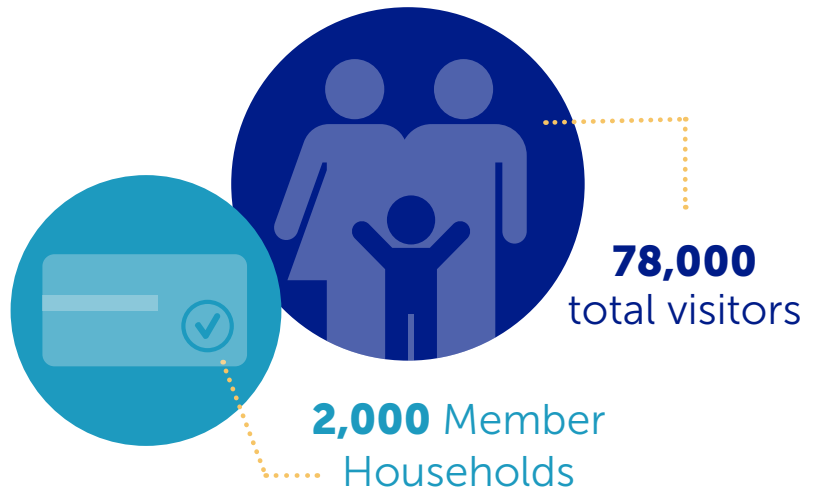
The Living Coast Experience



Sea the Change

Through animal interactions, art displays, and wildlife exhibits, SEA the Change invited guests to understand the challenges wildlife are facing due to climate change and pollution.


The Living Coast Experience



The Living Coast Experience



Trail to Bay Challenge

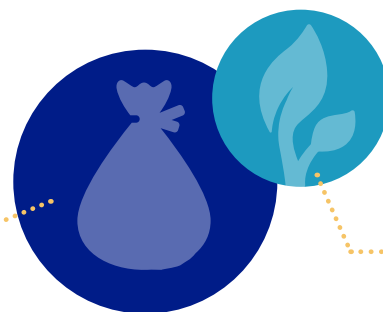
 **Trail to Bay Challenge** is a community program that mobilizes urban families to explore the outdoors. In partnership with the City of Chula Vista and with support from the California State Parks Habitat Conservation Fund, participants are encouraged to explore, learn, and protect wildlife by attending three guided hikes and one cleanup. Those who complete the challenge are awarded with a family 4 pack admission to the Living Coast.



More than **1,000 volunteers** helped us clean up local parks, bays, rivers, and nature trails

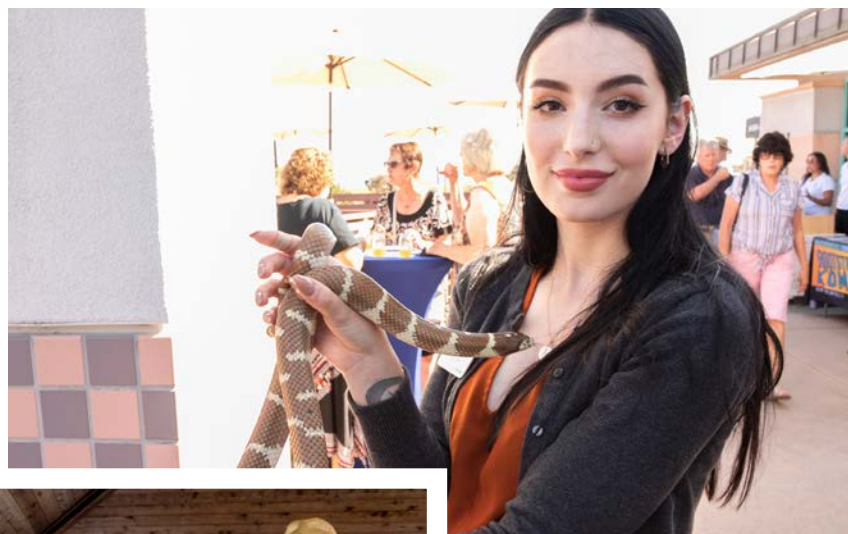
- In addition to California State Parks, we are grateful for the support of Wells Fargo, Port of San Diego, SeaWorld & Busch Gardens Conservation Fund and our local partners U.S. Fish & Wildlife Service, City of Chula Vista, Republic Services, and Chula Vista Kayak.


25,365 lbs.
of trash removed




17
location sites

The Living Coast Experience



 The **9th annual Farm to Bay** celebration raised \$110,000 in net proceeds.

 The **8th Annual Wine on the Waterfront** maritime industry benefit generated more than \$27,000 in net proceeds. Special thanks to Bob Kilpatrick, BAE Systems, Hill, Marine Group Boat Works, and General Dynamics NASSCO.

 **ZERO WASTE GOAL**

90% of event waste was diverted from landfills, our highest diversion ever!



The Living Coast Educational Programs



Of these, **4,630** students received free field trips thanks to the generous support of our community sponsors.

24,300
preK-12th grade students
experienced field trips
to the Living Coast

Special thanks to all educators throughout San Diego County – **1,800 teachers** brought their classes to get up-close with nature.

The Living Coast Educational Programs



2,200 campers

(preK-teen) enjoyed
Wildlife Camps at
the Living Coast



**5,900
students**

participated in Our
Wild San Diego where
we bring education
programs into local
classrooms, libraries,
and community centers.

The Living Coast Educational Programs



Made possible by the **Port of San Diego**, Discovery Tables provided over **2,000** visitors of all ages with educational activities to learn about our local watershed. As a result, **70%** of these participants pledged to make changes in their daily lives to protect wildlife.

Discovery Table curriculum was translated for Spanish speakers thanks to the **California Coastal Commission's Whale Tail** program which helped us reach almost **10,000** Spanish speakers throughout south bay San Diego.

In partnership with **Chula Vista Elementary School District**, TK-8th grade students are encouraged to attend a coastal education program once per year at the Living Coast. All programs are aligned with Next Generation Science Standards and Common Core State Standards.



over **7,900**
students



over **475**
teachers

The Living Coast Educational Programs



Compost Workshops

Over **40** introduction-to-composting workshops were held on Sundays for **170** adults and kids.

We led **9** compost workshops at local schools reaching over **500** students.



Master Composter Program

66 Master Composter graduates can now be certified to teach others about composting.



ZERO WASTE

The Living Coast has adopted a zero waste initiative for onsite events with an average of **82% diversion of waste** (~1,500lbs) from the landfill.

The Living Coast Research Collaboration



Light-footed Ridgway's Rail Propagation and Reintroduction Program

The Living Coast is proud to be part of Team Clapper Rail, composed of organizations dedicated to the study, restoration and reintroduction of rails in southern California.

Currently, we are the only zoological institution in the world where the endangered light-footed Ridgway's rail species can be viewed by the public.

28 of the **50** rails released last season were hatched at the Living Coast.



The Living Coast Volunteers



325
active volunteers
(ages 16-97)



31,187
volunteer hours equating
to **\$934,000** in value of
donated volunteer time



35 +
community outreach
events throughout
San Diego County



\$100,000 and Above

U.S. Fish & Wildlife Service

\$50,000-\$99,999

Port of San Diego

Price Philanthropies Foundation

Ridgway's Rail Recovery Non-Endowment Fund, The San Diego Foundation

\$25,000-\$49,999

San Diego Gas and Electric®

\$10,000-\$24,999

Collins Aerospace

Las Patronas

Marine Group Boat Works

Seven Mile Casino

Sprouts Farmer's Market - Chula Vista and Eastlake

Wells Fargo

\$5,000-\$9,999

Chef Works

City of Chula Vista Environmental Services Section

Curtiss Wright

Daphne Seybolt Culpeper Memorial Foundation, Inc.

Hans and Margaret Doe Charitable Trust

The Elwyn Heller Foundation of San Diego

Friends of San Diego Wildlife Refuges

Susan Fuller

J.F. Beyster Fund, The San Diego Foundation

Mission Federal Credit Union

Nelson Family

Premier Scaffold Inc.

San Diego Association of Governments

SeaWorld & Busch Gardens Conservation Fund

\$1,000-\$4,999

Alaskan Copper & Brass Company

BAE Systems

Baldwin & Sons

Jim Biddle

Jeanne and James Bonk

Christine Bowers

Boys & Girls Foundation

California Coastal Commission

Lori and Phil Coons

Cox Communications, Inc.

Erica Diamond

Epsilon Systems Solutions

Hawthorne Power Systems

Susan and Mike Hein

Kendall and Matthew Helm

JAG Yacht Coatings, Inc.

Jo-Kell Inc.

Mike Kolaric

Kristina and Semyon Kruglyak

Alicia and Tracy Lamb

Jean and Christopher Lewis

San Diego Downtown Lions Club

Loews Coronado Bay Resort

Michele Mangan and Robert Kilpatrick

Miller Hull Partnership, LLP

Network For Good

David Noji

Bridget and Jeff Palitz

The Parker Foundation

Pratt Memorial Fund

Karen and Cesar Quiros

Russell Interior Systems

San Diego County Employees' Charitable Organization

Mary Ann Saponara

South Bay Sand Blasting and Tank Cleaning

Southcoast Welding & Mfg, LLC

Southwestern College

Stanley/Stearns Fund, The San Diego Foundation

Tecnico Corporation

The San Diego Foundation

The William Hall and Ruth Rathell Tippett Foundation

ThermoFisher

Kathleen and Ben Vallejos

Walmart Chula Vista, #5305

Dina and Ken Weimer

\$500-\$999

Theresa Acerro

Kerry Bigelow

Eric Bonney

Clara Bryant

Michael Cabradilla

Francisco Cardona

Chula Vista Host Lions Club

Chula Vista Woman's Club

Coronado Distribution

Denise and Gary David

Rosemarie and Bob Davis

Janie Decelles

Debbie Discar-Espe

Debra Dodson

Tania and Jeffrey Doggett

Kathleen E Ellis

Ellen G. & Edward G. Wong Family Foundation

Kathleen and Bruce Ellis

Christine and Douglas Evans

Fiddler's Green Restaurant

Sylvia and Jefferey Gaffney

Gillett Refrigeration and Air Conditioning Inc.

Sara Giobbi and David Claypool

John Greenwell

Ellen Gross

Elena and Bob Koerber

Kathleen Morgan

Erin and David Nissen

Otay Crossing Self Storage

Jerry Petree

Michael Pratt

RIDA Development Corporation

San Diego Fly Fishers

Mariel and Jayson Schmidt

Shauna Stokes

Laurie Shaw and Gary Petill

Sweetwater Woman's Club

El and Bjorn Syversen

Sara and John Thomas

ViaSat Inc.

Walmart Chula Vista,#3516

Nancy Walsh

Roxanne and Peter Wergeland

Darlene Whorley

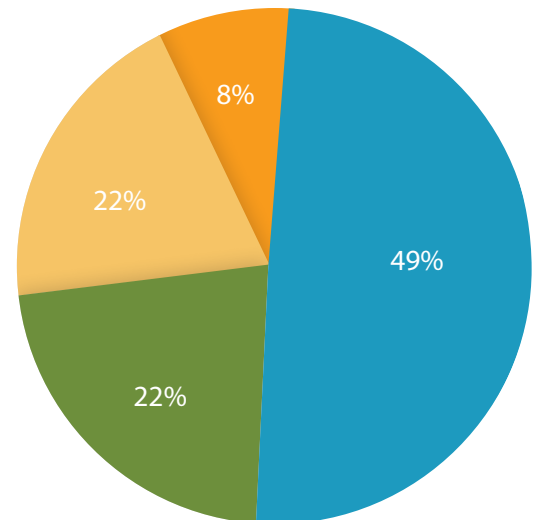
Andrew Yuen

Financials

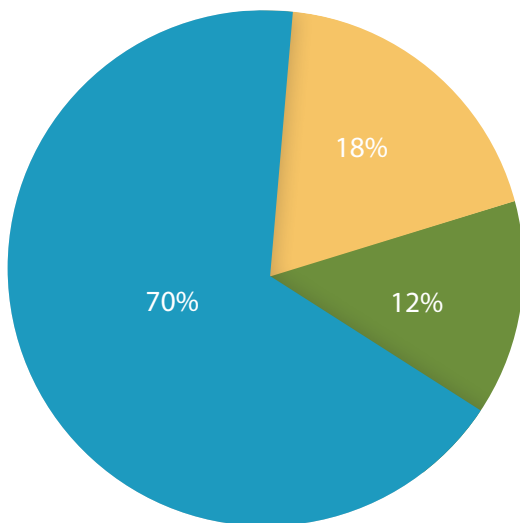


Revenue and Support

■ Fundraising and Special Events	\$1,017,498
■ Educational Program Services	\$462,174
■ Admissions and Membership	\$453,375
■ Gift Shop and Rentals	\$163,276
TOTAL REVENUES	\$2,096,323



*due to rounding, percentages may not add up to 100%



Expenses

■ Program Services	\$1,457,596
■ Fundraising and Marketing	\$375,676
■ Management, Administration, and General Operations	\$260,604
TOTAL EXPENSES	\$2,093,876

Board of Directors and Leadership Staff



Thank you **Susan Fuller** and **Ken Weimer** for your dedicated service to the mission of the Living Coast Discovery Center!



Executive Committee

Susan Fuller, Chairperson
Retired, Fuller's Plumbing

Bob Kilpatrick, Vice Chairperson,
Maritime Consultant

Ken Weimer, Treasurer;
Insurance Broker, Retired

Andy Yuen, Executive Committee,
U.S. Fish and Wildlife Liaison; San
Diego National Wildlife Refuge
Complex, Project Leader

Directors

Sam Cardoso, Mission Federal Credit
Union, AVP, Branch Manager

Herb Engel, Marine Group Boat Works,
President

Sara Giobbi, General Dynamics /
NASSCO, Environmental Engineering
Assistant Manager

Kendall Helm, Ph.D., San Diego
Gas & Electric, Vice President of
Energy Supply

Bob Koerber, BAE Systems SD Ship
Repair, Vice President and General
Manager, Retired

Christopher Lewis, The Lewis Group,
Inc., President

Frank Roseman, Honorary Director;
Rohr Aircraft Corporation, Retired

Kyle Strong, Collins Aerospace,
Associate General Counsel

Leadership Staff

Ben Vallejos, Executive Director

Lori Coons, Director of Community
Engagement and Development

Elizabeth Argyle, Director of
Education

Tina Matthias, Volunteer and
Programs Manager

Lindsay Bradshaw, Animal Care
Manager

Beth Sabiston, Animal Care Manager

Jessica LaFave, Development
Manager

Katharine Mathews, Facilities
Manager

Grecia Figueroa, Marketing and
Communications Manager

To learn more about ways to support the Living Coast, please visit:
www.TheLivingCoast.org/donate



*The Living Coast Discovery
Center is grateful for the loyal
commitment and support of
the City of Chula Vista!*



Annual Report

Fiscal Year 2018-2019

Thank you for supporting our vision to inspire care and exploration of the living Earth by connecting people with coastal animals, plants, and habitats.



Living Coast Discovery Center
1000 Gunpowder Point Drive
Chula Vista, CA 91910

(619) 409-5900

www.TheLivingCoast.org   